

COZINY PLUS

Alternating Pressure Air Flotation Mattress For Pediatric

Carilex Coziny Plus offers wound care therapy explicitly designed to take care of infants and children at risk of developing pressure ulcers or already enduring distress and discomfort from pressure ulcers. Equipped with Intelligent Pressure Sensing (IPS) Technology, which responds to patient movements on the mattress by automatically adjusting internal mattress pressure, Coziny Plus regulates airflow and continuously provides total envelopment for our patients.



Intelligent Pressure Sensing

Responds to patient movements on mattress by automatically adjusting internal mattress pressure



Static Therapy

All air cells maintain constant pressure support and maximize patient's contact area to redistribute pressure



Dynamic Mode with Multiple Cycle Times

Various cycle time selection : 10, 15 and 20 minutes, for alternating pressure therapy



Multiple Compatibility

Compatible with multiple mattress sizes for various body types



Multiple Weight Settings

Selectable weight settings to ensure optimal pressure relief for all body types

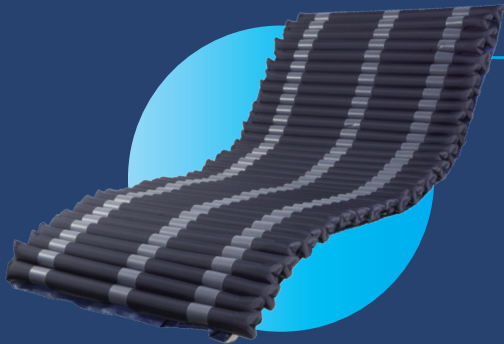


Battery backup up to 24 hours

Automatically activates battery backup in the event of main power failure and allows treatment to continue during patient transportation and examination

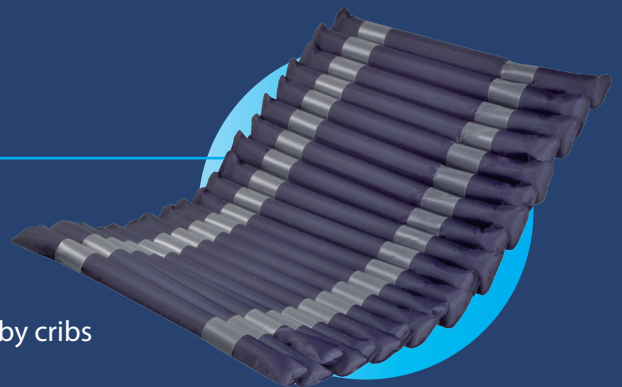
The Coziny Mattresses

Carilex gives extra consideration to avoid sharp or protruding components from the mattresses, providing the most protective wound care solution for the most sensitive skin.



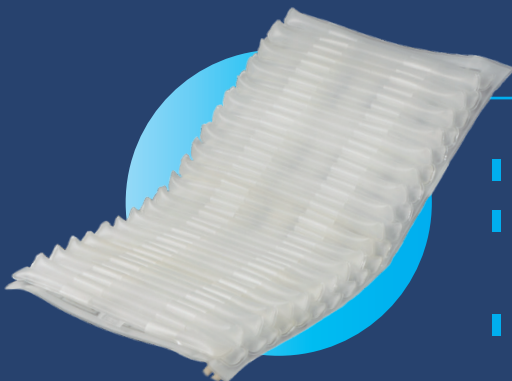
Coziny 300 Mattress | For Baby Cot

- For patient up to 25kgs
- 4 cm foam base integrated for extra protection
- 2 connecting hoses outlets for different positions and baby cots



Coziny 200 Mattress | For Baby Crib

- For patient up to 10kgs
- 2 cm foam base integrated for extra protection
- 2 connecting hoses outlets for different positions and baby cribs



Coziny 100 Mattress | For Incubator

- For patient up to 3.5kgs
- Extra soft 100% TPU material
- Special engineered design to distribute the temperature through the air channels keeping the baby temperature uniform without affecting incubator settings
- Hidden zipper with protection pad

Technical Data	Power Unit Model	REF : SR321
	Power Input	100-240Vac 50-60Hz 1.5A
	Power Consumption	23W Adaptor + Pump; 7W Pump only
	Weight	Power Unit : 0.92kg (2.0lb) Mattress Set : ● Coziny 100 : 0.8kg (1.8lb) ● Coziny 200 : 1.3kg (2.9lb) ● Coziny 300 : 3.9kg (8.7lb)
	Dimension	Power Unit : 10" x 6" x 2" (24.5 x 15.5 x 6.1 cm) (W x H x D) Mattress Set (W x L x H) : ● Coziny 100 : 16"x28"x 1.2" (41 x 70 x 3 cm) ● Coziny 200 : 19"x30"x 2.3" (49 x 75 x 5.8 cm) ● Coziny 300 : 28"x55"x 3.1" (70 x 140 x 7.8 cm) ● other size upon request
	Agency Approval	US NRTL - MET classified Mark_ANSI/AAMI ES60601-1
	Operating Condition	● Temperature : 5°C to 40°C (41°F to 104°F) ● Humidity : 15% to 90%
	Transportation & Storage Condition	● Temperature : -25°C to 70°C (-13°F to 158°F) ● Humidity : 0% to 90%
Weight Capacity	● Coziny 100 : 0.5kg-3.5kg (1lb to 8lb) ● Coziny 200 : 4kg-10kg (9lb to 22lb) ● Coziny 300 : 11kg-25kg (24lb to 56lb)	

This Power Unit is not AP/APG protected

www.carilexmedical.com

Carilex Medical, Inc. **HO**

TEL : +886-3-328-7882
No.77, Keji 1st Rd., Guishan District,
Taoyuan City (33383), Taiwan

Carilex Medical USA

TEL : +1-866-551-4227
17068 Evergreen Place, Unit A, City of Industry,
CA 91745 USA

Carilex Medical Germany

TEL : +49-4121-476896
Fritz-Strassmann Str. 5, 25337 Elmshorn,
Germany

Carilex Medical United Kingdom

TEL : +44-1323-761900
5th Floor, 167-169 Great Portland St,
London W1W 5PF, United Kingdom